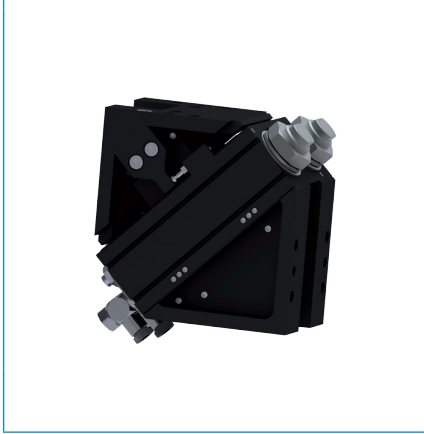


# ANGLE PIVOT UNITS

## INSTALLATION SIZE SW74

### ▶ PRODUCT SPECIFICATIONS



### ▶ INCLUDED IN DELIVERY



Flow Control Valves - with Swivel joint  
**DRV1-8X6**



O-Ring  
**COR0050100**

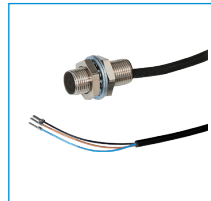
### ▶ RECOMMENDED ACCESSORIES



Magnetic field sensor  
Straight Cable 5 m  
**MFS204KHC**



Magnetic field sensor  
Straight Cable 0,3 m - Connector M8  
**MFS204SKHC**



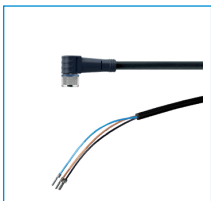
Inductive proximity switch  
- Cable 5 m  
**NJ8-E2**



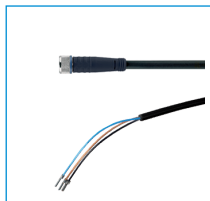
Inductive proximity switch  
- Connector M8  
**NJ8-E2S**



Attachment Kit  
**ANS0063**



Plug-in connector Angled Cable 5m - Socket M8 (female)  
**KAW500**



Plug-in connector Straight Cable 5m - Socket M8 (female)  
**KAG500**



Plug-in connector customizable Straight - Connector M8  
**S8-G-3**



Plug-in connector customizable Straight - Connector M12  
**S12-G-3**



Pressure Safety Valve  
**DSV1-8**

